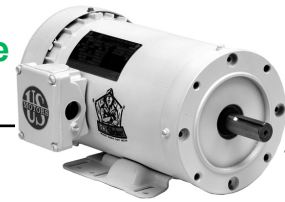


Painted Washdown Three Phase, Totally Enclosed, C-Face



The Slicker™

APPLICATIONS:

Suitable for food processors, canners, meat packers, bakeries, dairies, drug and cosmetic manufacturers for sanitary, easily cleaned motors.

FEATURES:

- Class F Insulation, Class B Rise At Full Load On 60 Hertz Sine Wave Power
- BISSC® Certified, Smooth Design For Easy Cleaning
- USDA® Approved Non-Toxic White Epoxy Paint
- Moisture Resistant Gasketed Conduit Box With NPT Lead Holes
- V-Ring Rotating Shaft Seals
- Full 50 & 60 Hertz Operating Data On Nameplate (180-210 Frame)
- 40°C Ambient, NEMA® Design B Performance On 60 Hertz Sine Wave Power
- Removable Drain Plugs (180 & 210 Frames)
- Double Contact Sealed Ball Bearings
- Internal Corrosion Protection On Rotor, Stator, Winding & Frame
- Double Dip & Bake On Winding
- 303 Stainless Steel Shaft, F1 Assembly Position
- Stainless Steel Nameplate
- Totally Enclosed Fan Cooled (TEFC) Except Where Noted
- Multiple Stainless Steel T-Type Drains (56 & 140 Frame)
- Refer to Page vii for Suitability of IHP Motors on Variable Frequency Drives

C-Face Footed

| HP | RPM | Voltage | Frame | Catalog Number | Discount Symbol | SF | "C" Dim. (inches) | Ship Wt. (lbs) | NEMA Nom. Eff. | Full Load Amps | Notes |
|-------|------|-------------|-------|----------------|-----------------|------|-------------------|----------------|----------------|----------------|------------|
| 1/2 | 3600 | 208-230/460 | 56C | WD12S1AC | DS-3WD | 1.15 | 11.8 | 32 | 75.5 | 1.8-1.6/0.8 | 28, NNP |
| | 1800 | 208-230/460 | 56C | WD12S2AC | DS-3WD | 1.15 | 11.3 | 26 | 82.5 | 1.9-1.8 / 0.9 | 28, NNP |
| | 1200 | 208-230/460 | 56C | WD12S3AC | DS-3WD | 1.15 | 11.3 | 32 | 82.5 | 2.2-2.2/1.1 | 28, NNP |
| 3/4 | 3600 | 208-230/460 | 56C | WD34S1AC | DS-3WD | 1.15 | 11.8 | 32 | 75.5 | 2.4-2.2 / 1.1 | 28, NNP |
| | 1800 | 208-230/460 | 56C | WD34S2AC | DS-3WD | 1.15 | 12.3 | 26 | 82.1 | 2.6-2.4/1.2 | 28, NNP |
| | 1200 | 208-230/460 | 56C | WD34S3AC | DS-3WD | 1.00 | 12.3 | 22 | 82.0 | 3.2/1.6 | 28, NNP,LA |
| 1 | 3600 | 208-230/460 | 56C | WD1P1AC | DS-3WD | 1.15 | 12.3 | 32 | 77.0 | 3.4-3.2 / 1.6 | 28 |
| | 1800 | 208-230/460 | 143TC | WD1P2A14C | DS-3WD | 1.15 | 12.8 | 26 | 85.5 | 3.4-3.3/1.8 | |
| | 1800 | 208-230/460 | 143TC | WD1S2A14C | DS-3WD | 1.15 | 12.8 | 26 | 77.4 | 3.4-3.3/1.7 | 28, NNP,LA |
| | 1800 | 208-230/460 | 56C | WD1P2AC | DS-3WD | 1.15 | 12.3 | 26 | 85.5 | 3.4-3.3/1.8 | |
| | 1200 | 208-230/460 | 56C | WD1S3AC | DS-3WD | 1.15 | 12.8 | 32 | 82.5 | 3.8-3.8/1.8 | 28, NNP |
| 1 1/2 | 3600 | 208-230/460 | 56C | WD32P1AC | DS-3WD | 1.15 | 12.8 | 32 | 84.0 | 4.3-4.1/2.1 | 28 |
| | 1800 | 208-230/460 | 145TC | WD32P2A14C | DS-3WD | 1.00 | 14.3 | 26 | 86.5 | 4.6-4.4/2.2 | 28 |
| | 1800 | 208-230/460 | 56HC | WD32P2ACH | DS-3WD | 1.00 | 14.3 | 47 | 86.5 | 4.6-4.4/2.2 | 28 |
| 2 | 3600 | 208-230/460 | 56HC | WD2P1AHC | DS-3WD | 1.15 | 13.9 | 42 | 85.5 | 6.0-5.6/2.8 | |
| | 3600 | 208-230/440 | 56HC | WD2S1AHC | DS-3WD | 1.15 | 13.3 | 32 | 80.0 | 6.0-5.4 / 2.7 | NNP,LA |
| | 3600 | 208-230/460 | 145TC | WD2P1A14C | DS-3WD | 1.15 | 13.9 | 35 | 85.5 | 5.4-4.9/2.5 | |
| | 1800 | 208-230/460 | 56HC | WD2P2AHC | DS-3WD | 1.00 | 15.0 | 46 | 86.5 | 6.2-6.0/3.0 | |
| | 1800 | 208-230/460 | 145TC | WD2P2A14C | DS-3WD | 1.00 | 14.9 | 48 | 86.5 | 6.2-6.0/3.0 | |
| | 1200 | 208-230/460 | 184TC | WD2P3DC | DS-3WD | 1.15 | 16.8 | 80 | 88.5 | 6.4-6.2/3.1 | |
| 3 | 3600 | 208-230/460 | 145TC | WD3P1A14C | DS-3WD | 1.15 | 13.9 | 76 | 86.5 | 8.1-7.2/3.6 | 14 |
| | 3600 | 208-230/460 | 182TC | WD3P1DC | DS-3WD | 1.15 | 18.8 | 73 | 88.5 | 8.1-7.4/3.7 | |
| | 1800 | 208-230/460 | 182TC | WD3P2DC | DS-3WD | 1.15 | 16.8 | 58 | 89.5 | 8.2-7.6/3.8 | 03 |
| | 1200 | 208-230/460 | 213TC | WD3P3DC | DS-3WD | 1.15 | 19.4 | 117 | 90.2 | 9-8.3/4.2 | |
| 5 | 3600 | 208-230/460 | 184TC | WD5P1DC | DS-3WD | 1.15 | 18.8 | 85 | 89.5 | 13.3-11.8/5.9 | |
| | 1800 | 208-230/460 | 184TC | WD5P2DC | DS-3WD | 1.15 | 16.8 | 87 | 89.5 | 13.5-12.5/6.2 | 03 |
| | 1200 | 208-230/460 | 215TC | WD5P3DC | DS-3WD | 1.15 | 20.4 | 128 | 89.5 | 15-14.1/7 | |
| 7 1/2 | 3600 | 208-230/460 | 184TC | WD7P1AFC | DS-3WD | 1.15 | 18.8 | 103 | 90.2 | 19.7-17.3/8.7 | 14 |
| | 3600 | 208-230/460 | 213TC | WD7P1DC | DS-3WD | 1.15 | 21.4 | 137 | 91.0 | 19.7-17.4/8.7 | |
| | 1800 | 208-230/460 | 213TC | WD7P2DC | DS-3WD | 1.15 | 19.4 | 140 | 91.7 | 20-18.2/9.1 | 03 |
| 10 | 3600 | 208-230/460 | 215TC | WD10P1DC | DS-3WD | 1.15 | 21.4 | 145 | 91.0 | 26.1-23.1/11.6 | |
| | 1800 | 208-230/460 | 215TC | WD10P2DC | DS-3WD | 1.15 | 20.4 | 128 | 91.7 | 26.5-23.9/11.9 | 03 |
| 15 | 3600 | 208-230/460 | 215TC | WD15P1DFC | DS-3WD | 1.15 | 21.4 | 154 | 93.0 | 38-35/17.4 | 14 |

Note 03 60/50 Hertz rated with no derate on HP; 230/460 volt 60 Hz ratings operate on 190/380 volt 50 Hz, 460V 60 Hz ratings operate on 380V 50 Hz; Full 60 & 50 Hz data on Nameplate

Note LA Limited Availability
Note NNP Non-NEMA® Premium

Note 14 NEMA® Design A
Note 28 TENV Enclosure